

CERTIFIED LAND CORNER RECORDATION

MAY 5 1987

DESCRIPTION OF CORNER EVIDENCE FOUND, AND ORIGINAL RECORD (if known)

S.34
S.3 S.2
and
S.34 S.35
S.2
T.13N
T.12N R.65W.
6th P.M.

Found no evidence of previous monumentation.

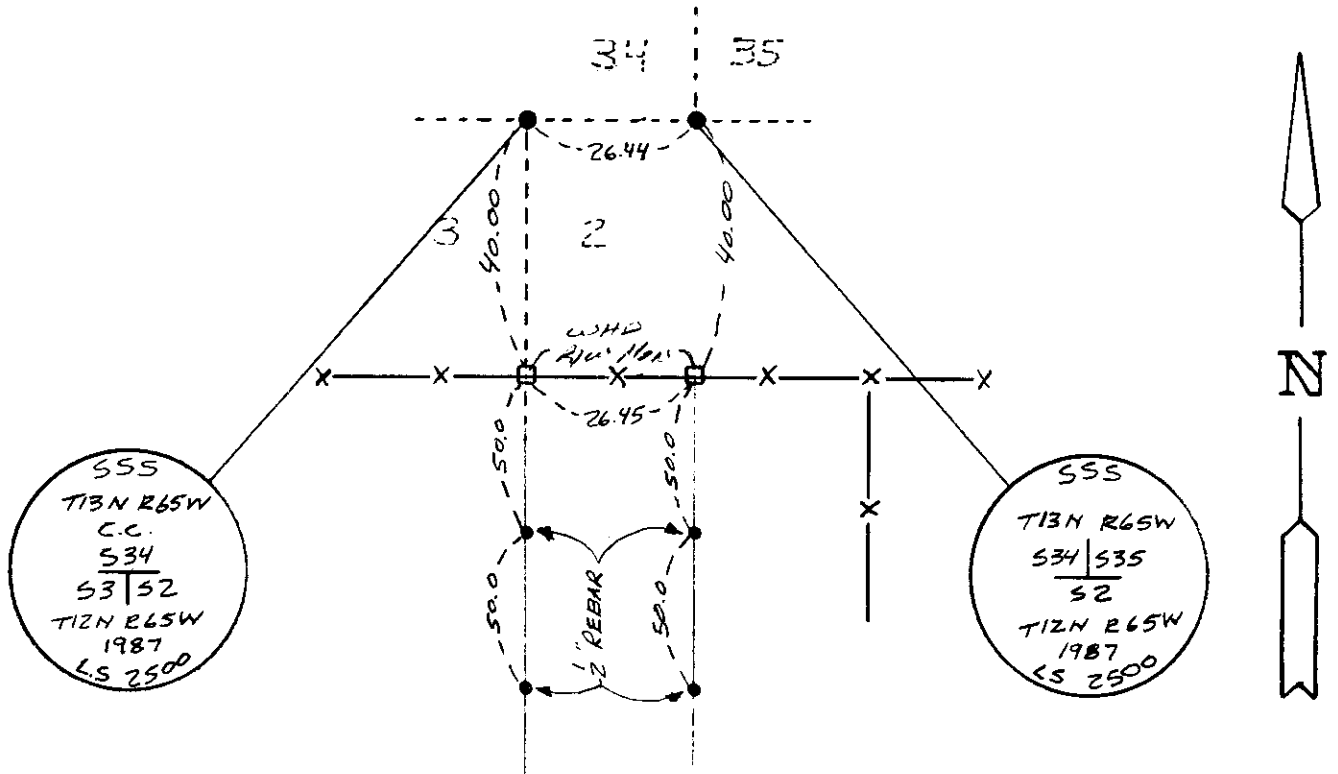
G.L.O. Record: Boulder 20" x 12" x 6".

DESCRIPTION OF MONUMENT AND ACCESSORIES ESTABLISHED TO PERPETUATE THE ORIGINAL LOCATION OF THIS CORNER:

At the corner: Set 2 - 5/8" x 18" rebar with 2" aluminum cap 0.1 feet below surface. Stamped as shown below set from WHD R/W plans and County Road plans.

Accessories : See ties below.

SKETCH, WITH COURSE AND DISTANCE TO ADJACENT CORNER IF DETERMINED IN THIS SURVEY. (May Sketch or Paste Reproduction on Reverse Side.)



I, John A. Steil certify that I have carefully performed or reviewed the work done on the diagrammed corner as reported on this recordation form and approve the same.

John A. Steil
Signature of Surveyor

L.S. 2500
Registration No.

STATE OF WYOMING,
Office of Clerk and Recorder,
County of Laramie

This "corner record" was filed for record on the 5th day of May, 1988, was noted on the cross-index plat and is assigned page No. 1987, in book No. 1259.

James C. Whitehead
County Official

Cross Index No.	A-17	T. 12N	R. 65W	Mer.	6th
	Z-17	T. 13N	R. 65W	Mer.	6th
		T. _____	R. _____	Mer.	
		T. _____	R. _____	Mer.	
		T. _____	R. _____	Mer.	
		T. _____	R. _____	Mer.	
		T. _____	R. _____	Mer.	